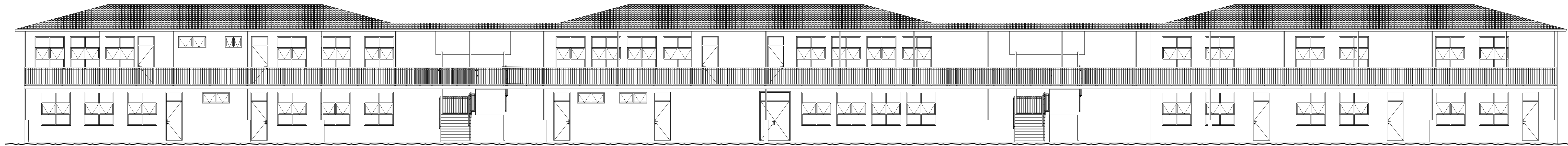
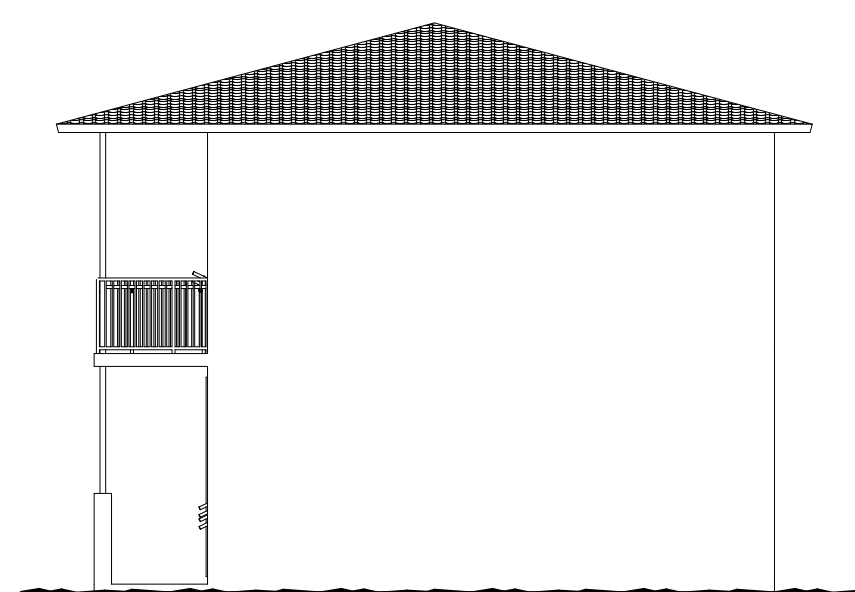


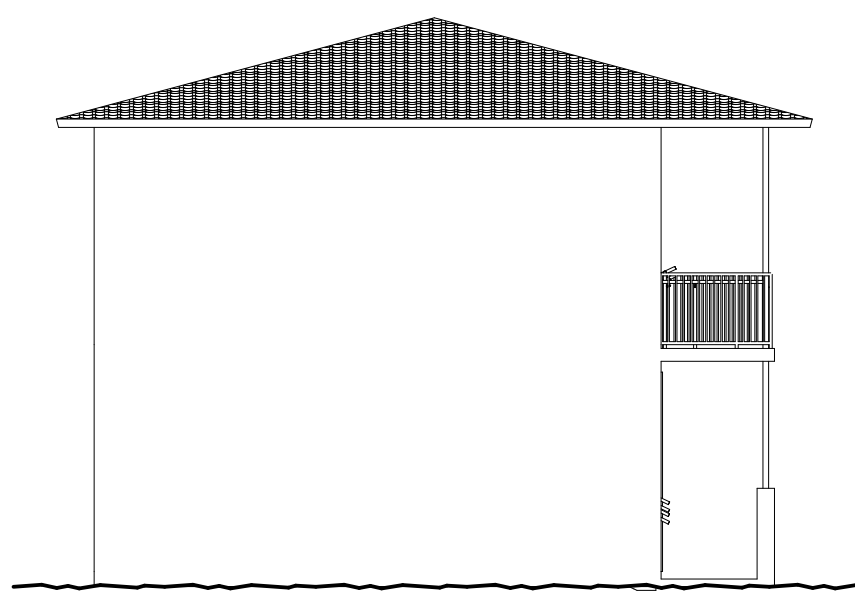
E01 Elevation 1:100



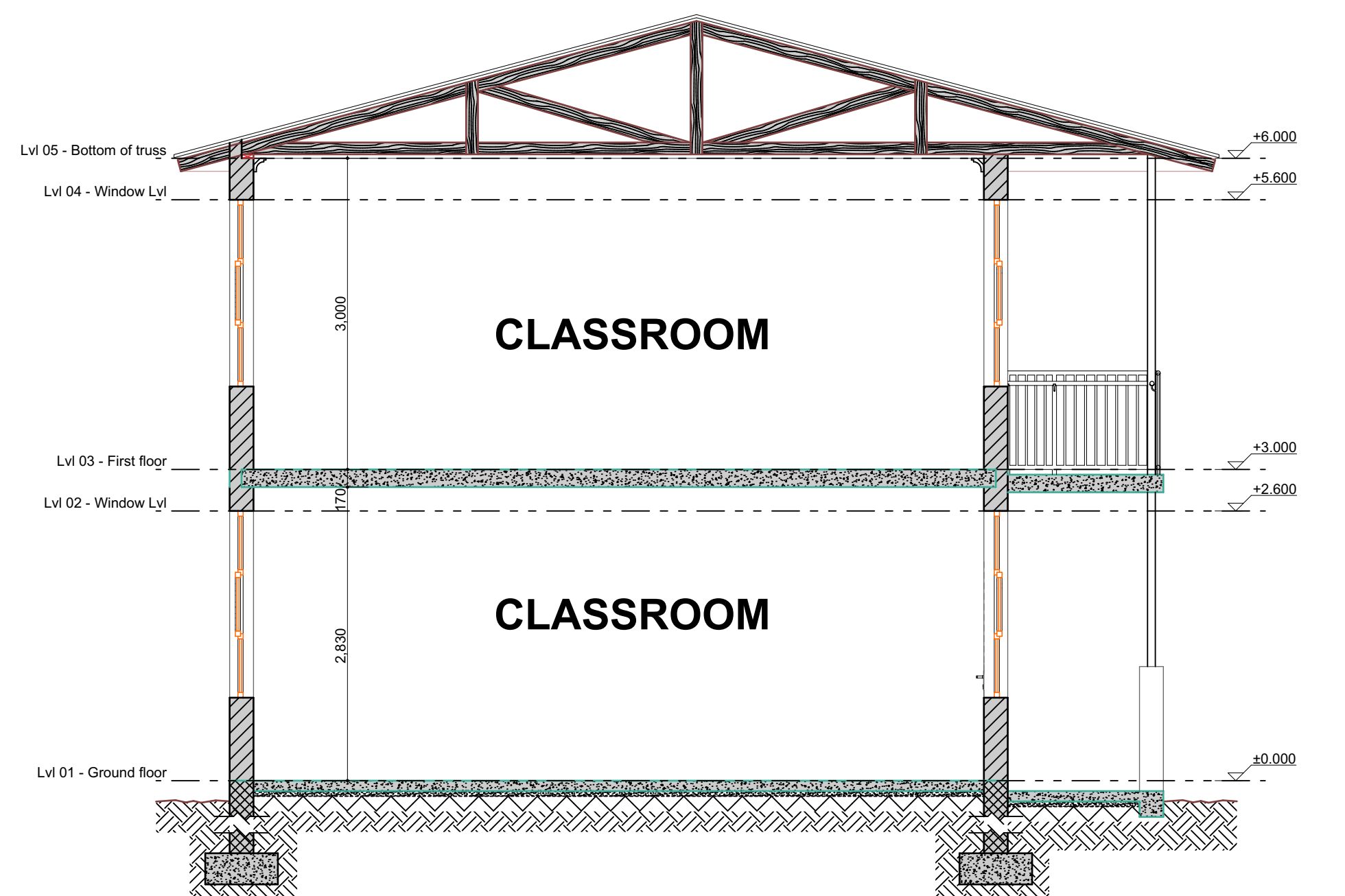
E03 Elevation 1:100



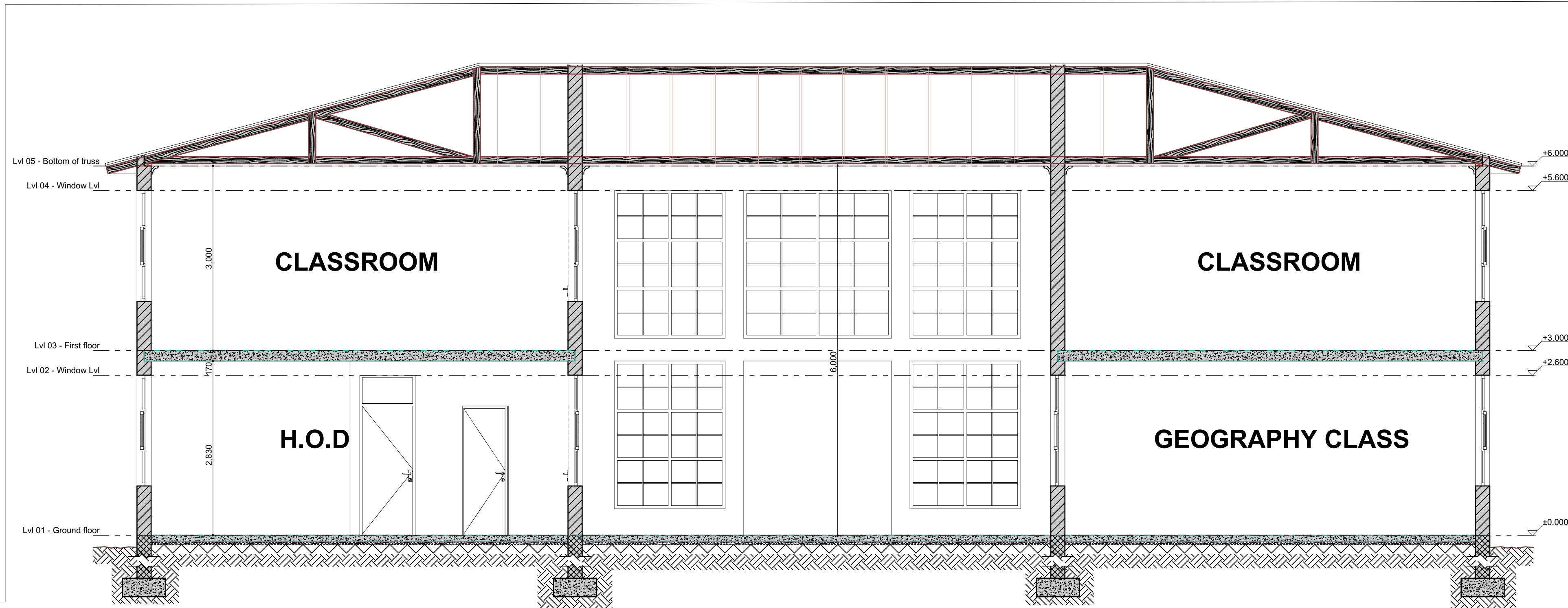
E02 Elevation 1:100



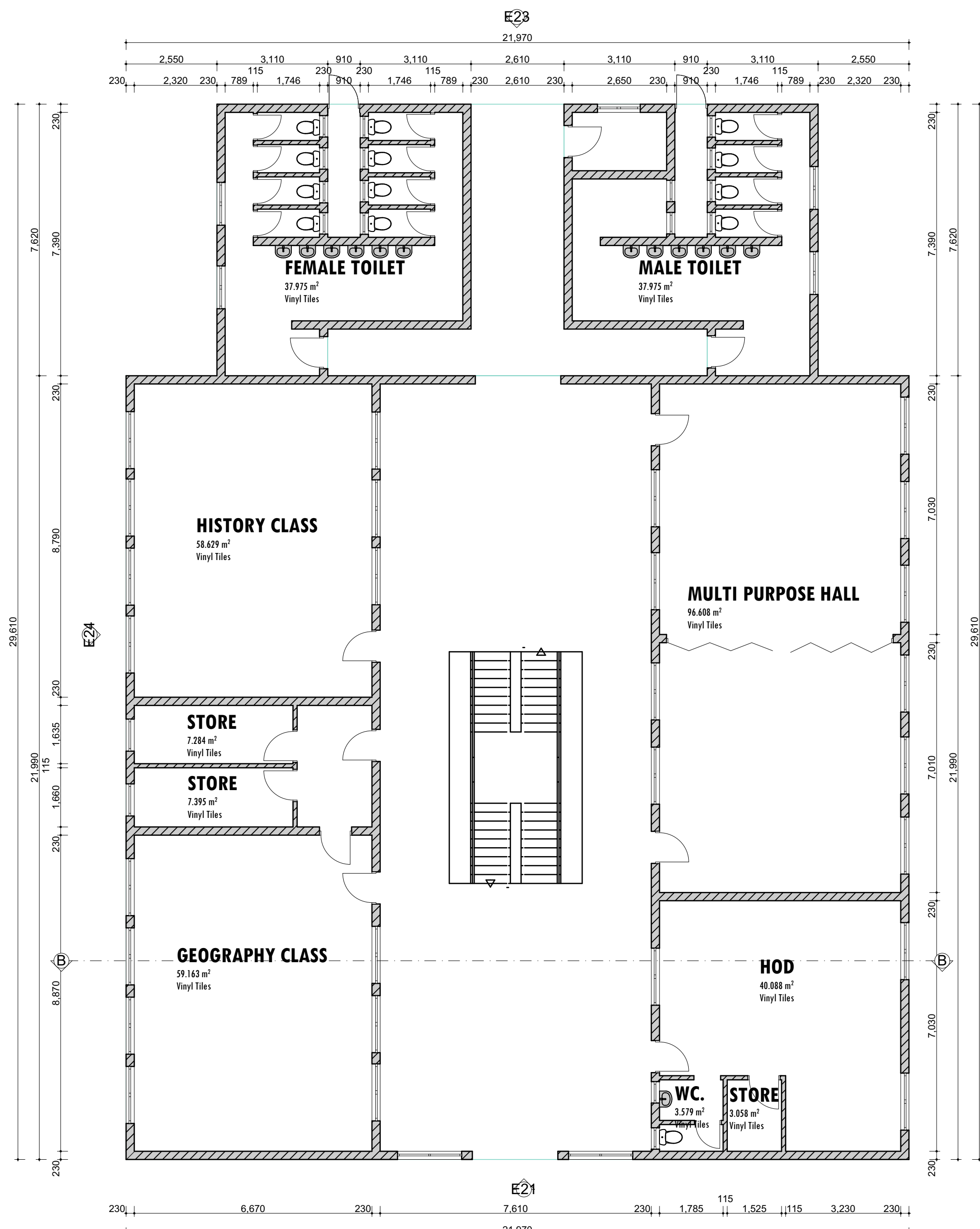
E04 Elevation 1:100



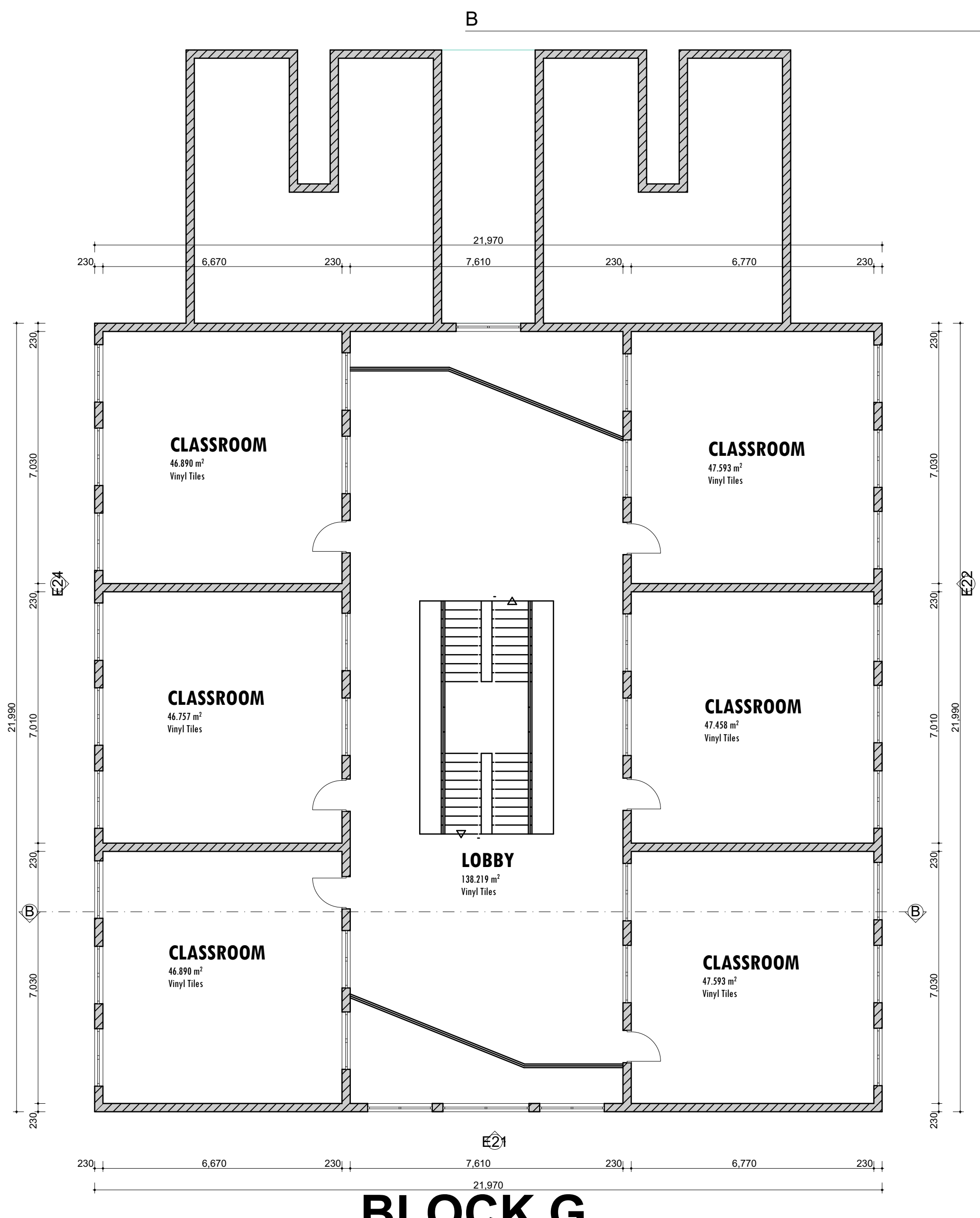
E Section E-E 1:50



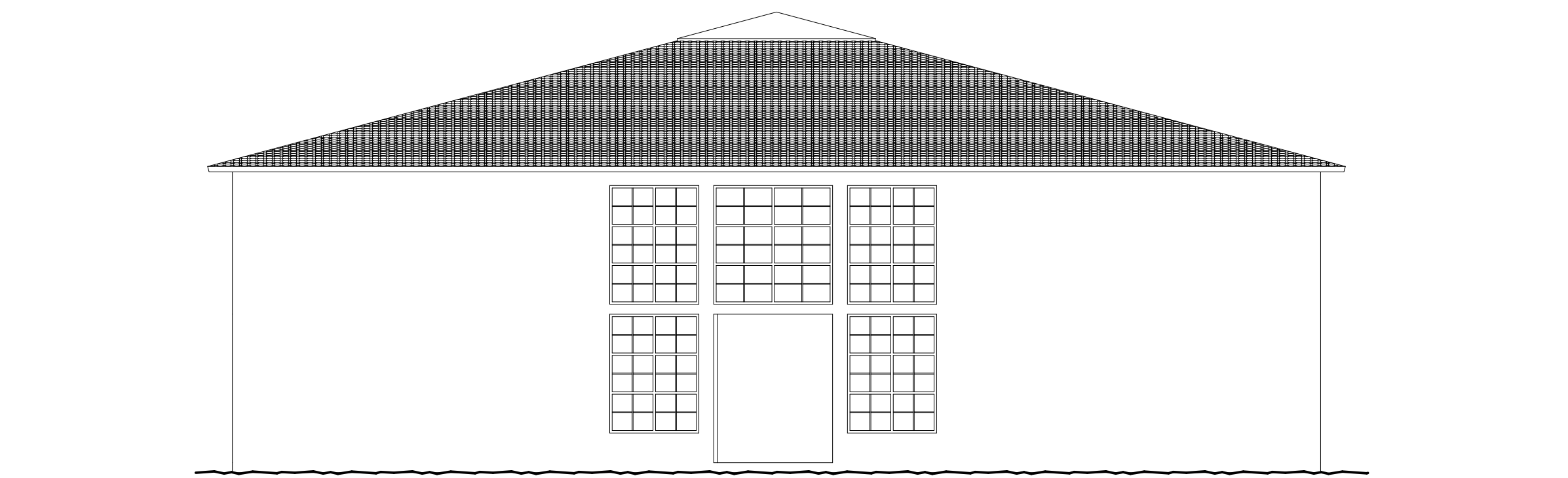
B Section B-B 1:50



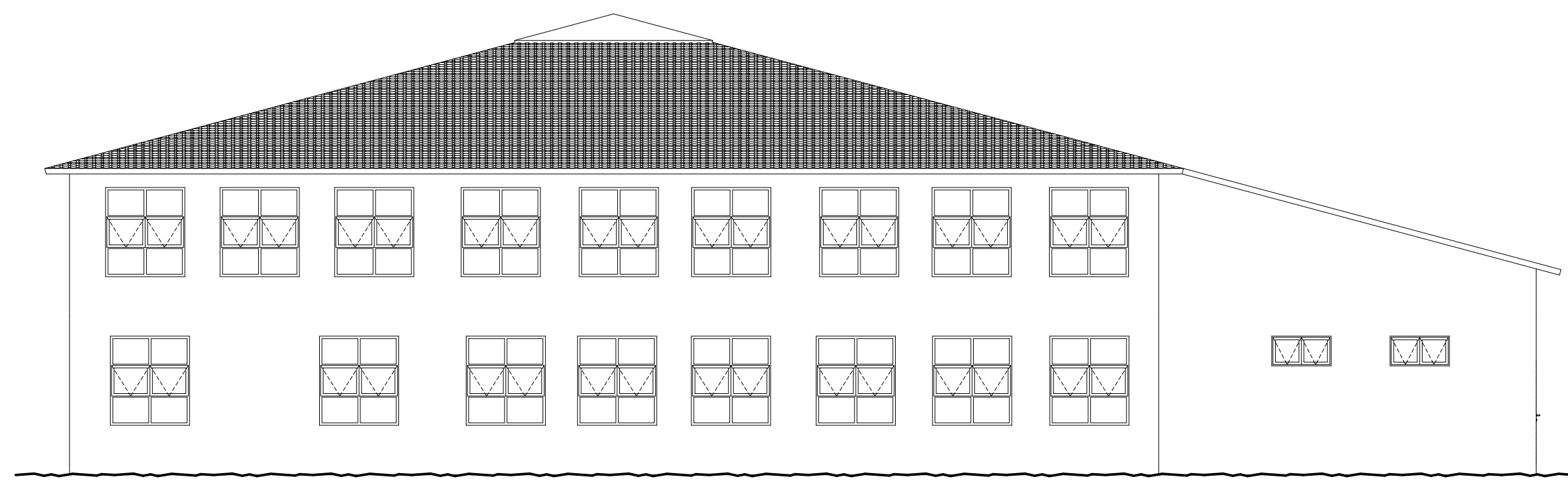
0. BLOCK G Ground Floor 1:100



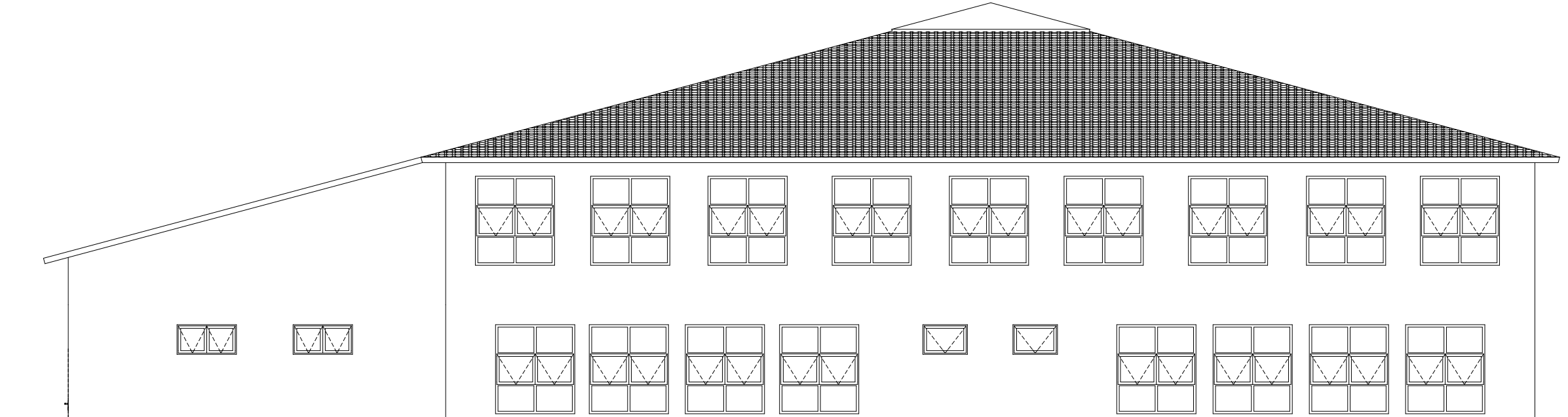
1. BLOCK G First Floor (1) 1:100



E21 Elevation 1:100



E22 Elevation 1:100



E24 Elevation 1:100

NO.	DATE	REVISION	DRAWN
1	20/01/2023		

- NOTES
- This drawing is copyright, reserved and remains the property of R&D Architecture Pty Ltd.
1. Prior to any demolition work, the architect, heritage consultant & contractor are to identify & mark buildings of heritage value.
 2. The contractor is to supply the architect & heritage consultant with a detailed proposal discussing how buildings will be cleaned, demolished and components stored for re-use. (where applicable)
 3. Once the contractor has completed the bulk earthworks, final platforms are to be surveyed and information forwarded to the architect & structural engineers for approval.
 4. All structural work is to Structural Engineers detail and specification.
 5. All internal road dimensions, road center lines, maneuvering spacing, turning circle and kerb radii are to Civil Engineers Detail. See Drawing Attached by ENGINEERS.
 6. All bulk earthwork details, cut & fill values are to Civil Engineers Detail: See Drawing Attached by CONSULTING ENGINEERS.
 7. All storm water attenuation measures and sewer reticulation is to Civil engineers Detail: See Drawing Attached by CONSULTING ENGINEERS.
 8. All positioning of electrical metering units, mini substations, distribution kiosks & capacity requirements are to Electrical Engineers Detail: See Drawing Attached by CONSULTING ENGINEERS.

CLIENT:

DBSA
DEVELOPMENT BANK OF SOUTHERN AFRICA
Building Africa's Prosperity

CONSULTANT:

infrachamps consulting (Pty) Ltd

PHYSICAL ADDRESS: 8 Birchwood Court, 43 Montrose Street, Vorna Valley, Midrand, 1696.

CONTACT DETAILS: EMAIL: mrand@infrachamps.com, Tel: +27 87 405 5888, Fax: +27 11 655 7011, TELL: +27 11 655 7000, CELL: +27 86 224 8885

EXTERNAL CONSULTANT:

RSO Architecture

PHYSICAL ADDRESS: 8 Pieter street, Highland Techno park, Centurion 0156.

CONTACTS: Tel: +27 87 405 5888, Email: info@rsodirect.co.za

DESIGNED	BY	DATE	SCALE
VERIFIED	BY	DATE	SCALE
VALIDATED	BY	DATE	SCALE

PROJECT Name: **Brookdale Secondary School**

DRAWING TITLE: Elevation, Section E-E, Ground Floor, Section B-B, First Floor (1)

DISCIPLINE	DRAWING NUMBER	STATUS	REVISION
ARCHITECTURE	RS22/ICKZNA.03	CV	02